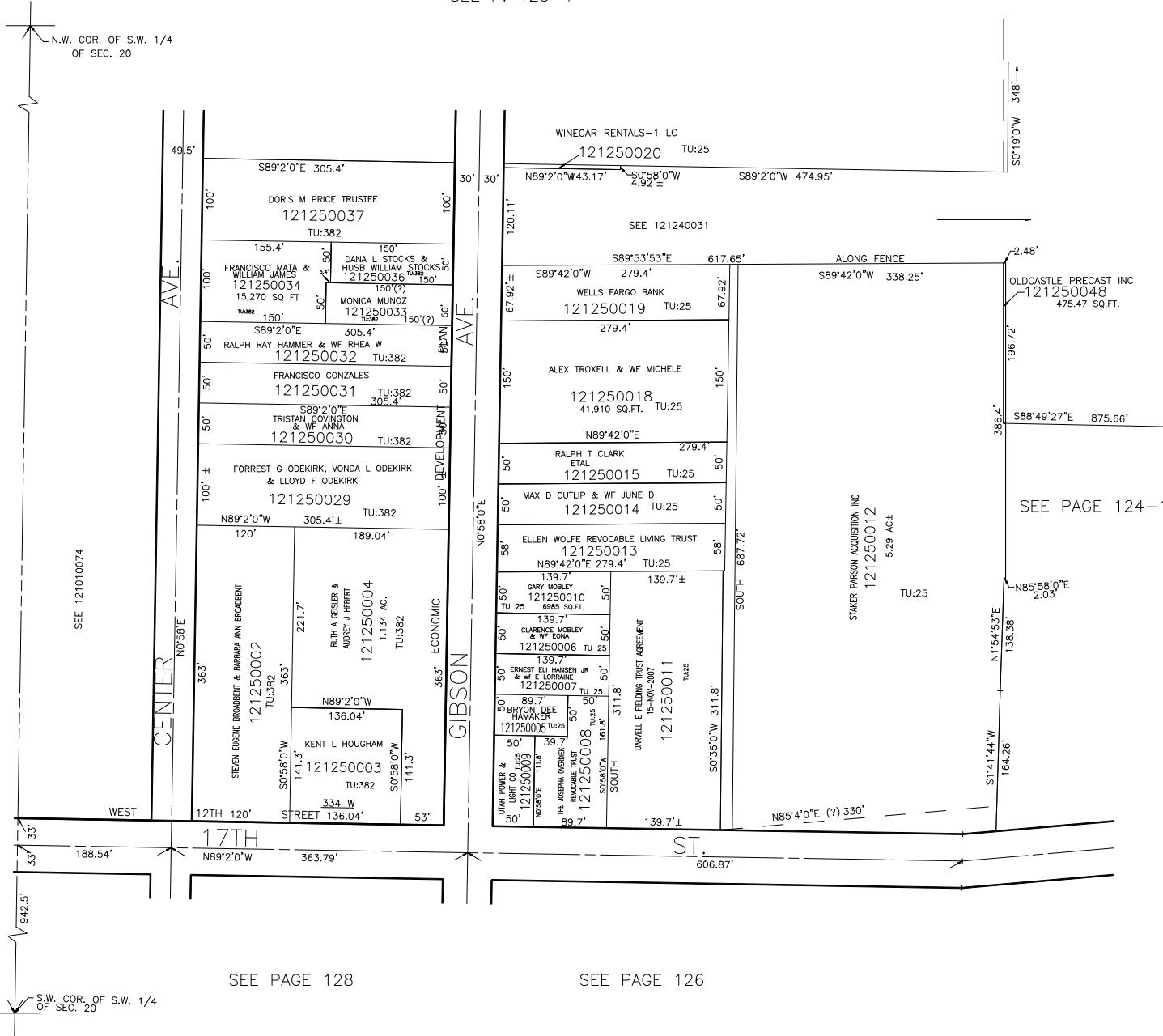


PART OF S.W. 1/4  
SECTION 20, T.6N., R.1W., S.L.B. & M.

IN OGDEN CITY  
SCALE 1" = 100'

TAXING UNIT: 25,382

SEE P. 125-1



SEE PAGE  
101

SEE PAGE 124-1

SEE PAGE 128

SEE PAGE 126